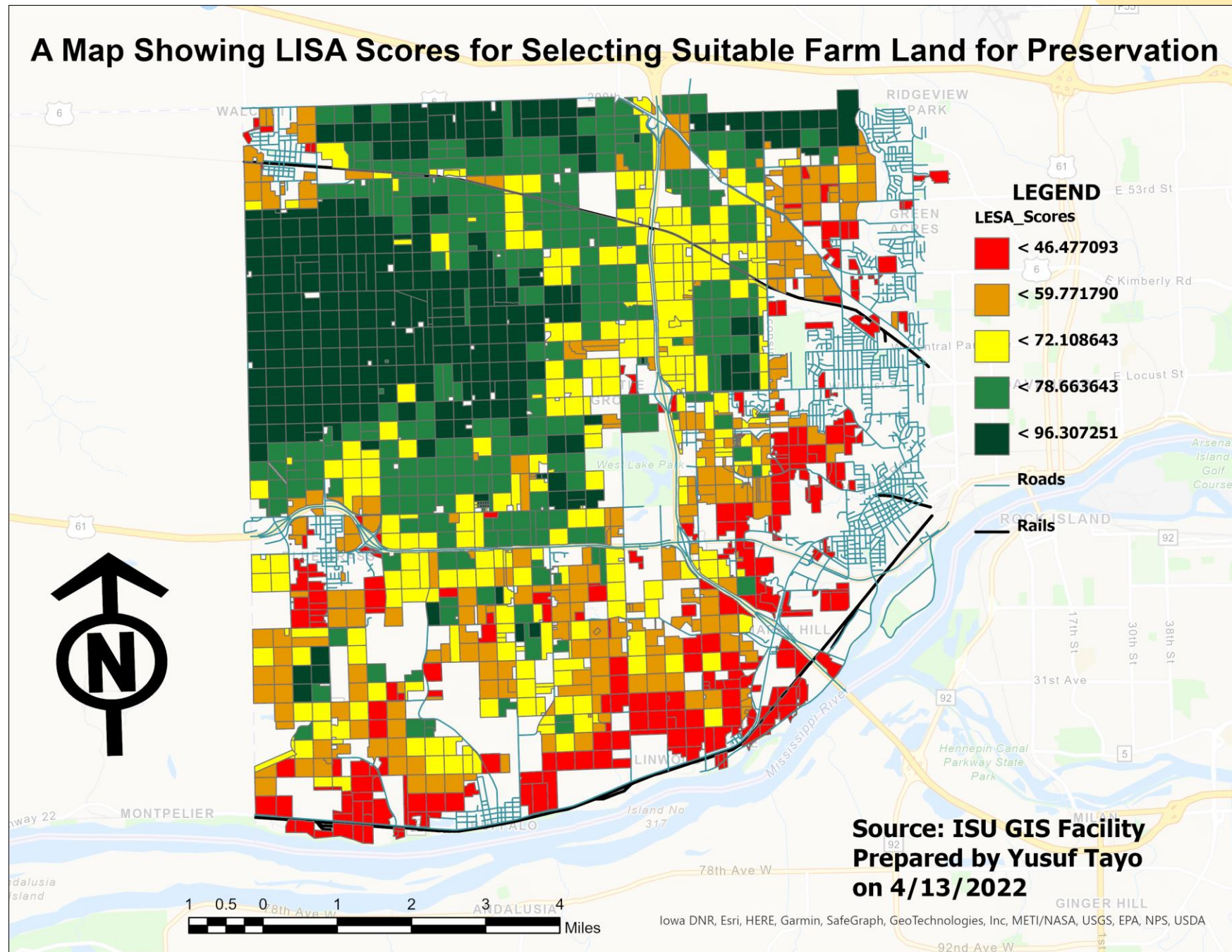


A Map Showing LISA Scores for Selecting Suitable Farm Land for Preservation



1. Which sites are most suitable for farmland preservation?

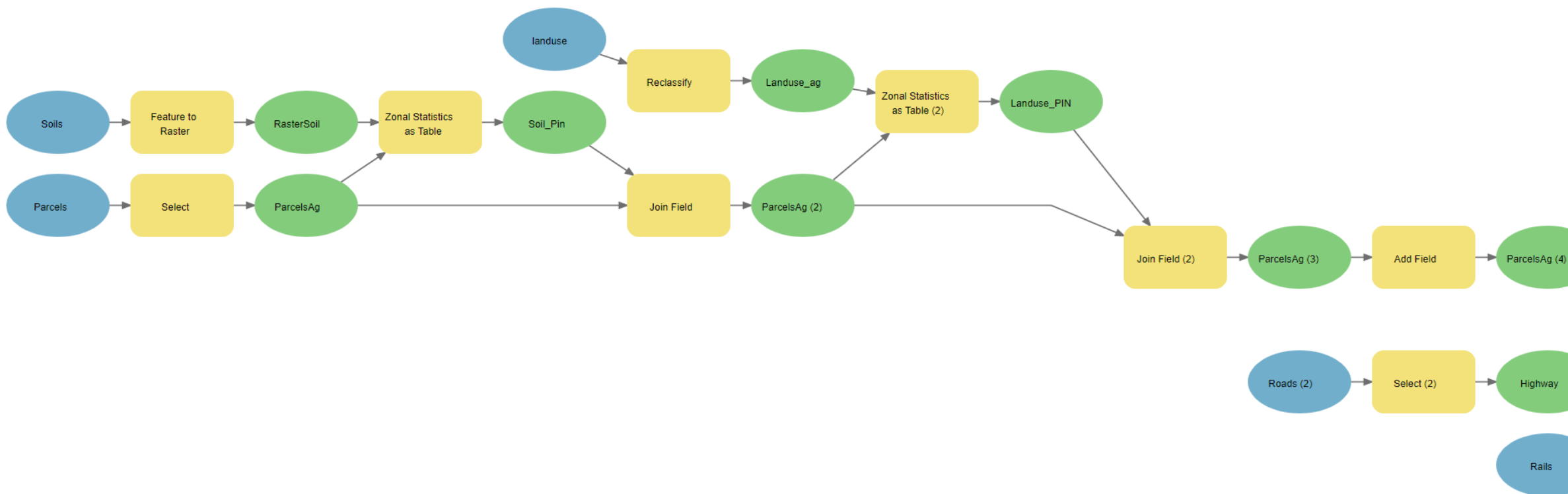
The sites that are most suitable for the farmland preservation are those with LESA scores greater than or equal to 96. these are more agglomerated at the Northwest site of the map with a deep green graduated color

2. What are the characteristics of these sites?

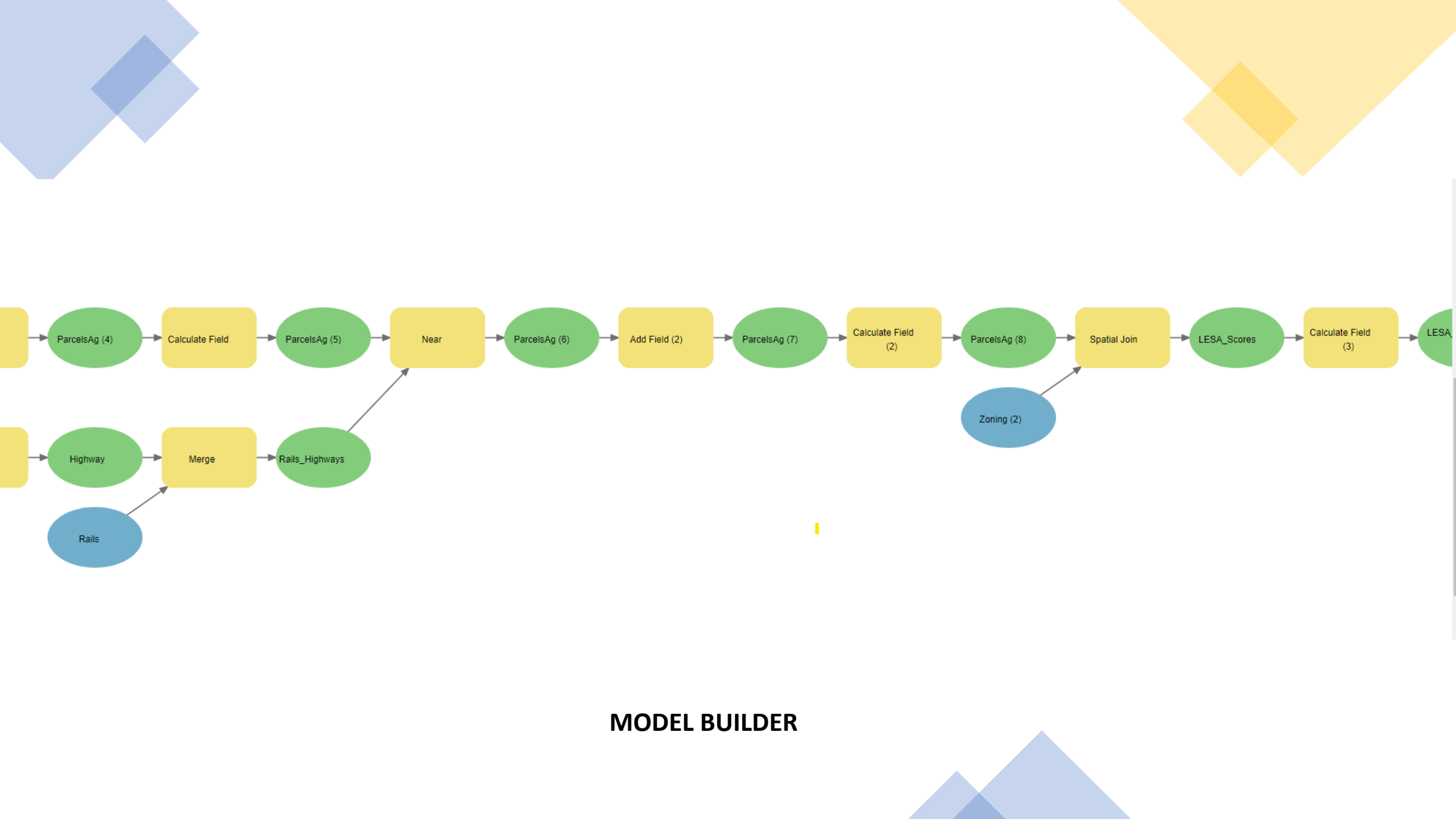
- a. They have a LESA Scores of 96 and above
- b. Have high rate of productive soil
- c. They are in close proximity to the railroad
- d. High potentials for agricultural use

3. If you were to alter the weighting of the four input variables, how would this change your results?

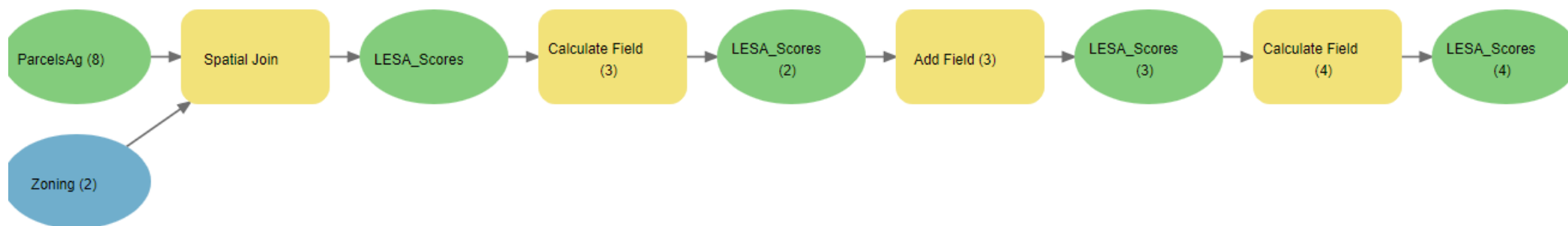
It will affect the result of the LESA scores, starting from the mean score of the inputs.



MODEL BUILDER



MODEL BUILDER



MODEL BUILDER